

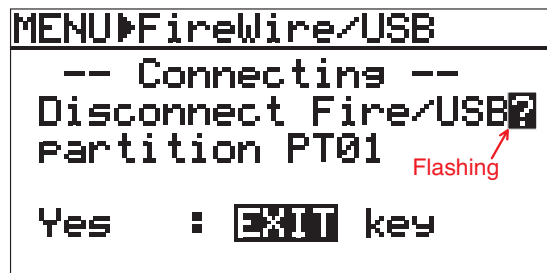
● Model 8370 USB/IEEE1394 Firmware Updating Procedures

PREPARATION 1: Update the DV824 software to V2.20 onwards. The latest software is V2.21 at the moment.

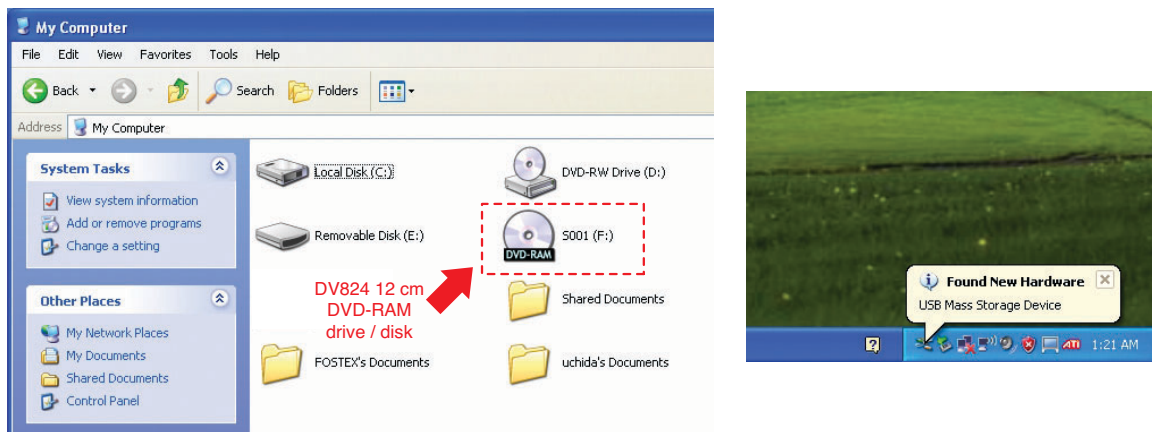
PREPARATION 2: Retrofit Model 9057 HD option into DV824.

PREPARATION 3: Retrofit Model 8370 USB/IEEE1394 option into DV824.

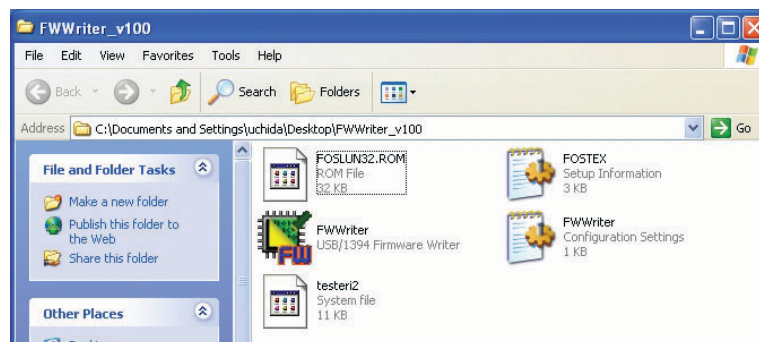
1. Power on DV824.
2. Press the [MENU] button, rotate and select “Firewire/USB” menu and then press the [MENU] button again, so that DV824 is put into the “Firewire/USB” mode. If DV824 is correctly put into the “Firewire/USB” mode, the DV824 LCD will indicate the following.



3. Connect the USB cable to Windows XP PC. (The firmware update application “FWWriter” runs only on Windows XP PC.) **Make sure that DV824 is correctly mounted by PC before going to the next step.**



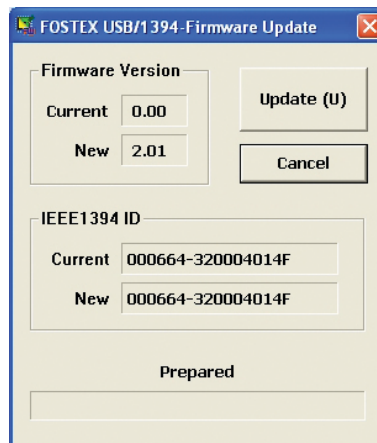
4. Unzip the file “FWWriter_v100.zip” sent together with this bulletin. If you do so, a new folder “FWWriter_v100” will be created. In this folder, the following files are included.



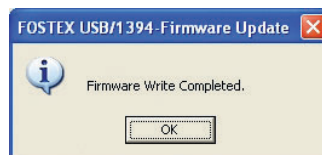
5. Double Click the “FWWriter” icon. If you do so, the following window will appear. To continue, click the “Continue Anyway” button.



6. If the application properly finds DV824 connected to the Windows XP PC, the following window will appear. The current firmware version is displayed as “0.00” and the new firmware version as “2.01”. After the message “Prepared” is displayed in the lower part of window, click the “Update” button.



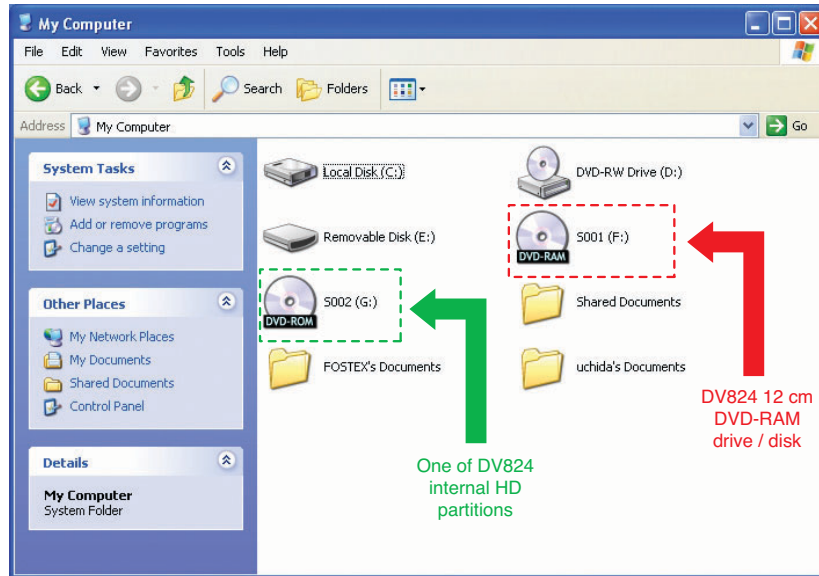
The messages “Erasing...”, “Writing...” and “Verifying...” will appear in order in the lower part of window. Then, the window below will appear indicating that updating the firmware is successfully completed. It will take about ten (10) seconds to complete the firmware update.



CAUTION: Do not power off PC / DV824 while updating the firmware.

7. Click the “OK” button.
8. Disconnect the USB cable. Then, **power off and on DV824**. (DV824 is automatically put it into the “Firewire/USB” mode again.)
9. Connect the USB cable from DV824 to Windows XP PC again.

10. Open up the “My Computer” window. If the firmware has been correctly updated, the DV824 internal HD will be mounted as “DVD-ROM” in addition to the DV824 12 cm DVD-RAM drive / disk mounted as “DVD-RAM”.



NOTE: Transferring data is only possible from the internal HD to PC. Transferring data from PC to the internal HD is prohibited. Thus, the internal HD is mounted as “DVD-ROM”.