



Ⓛ Left Side

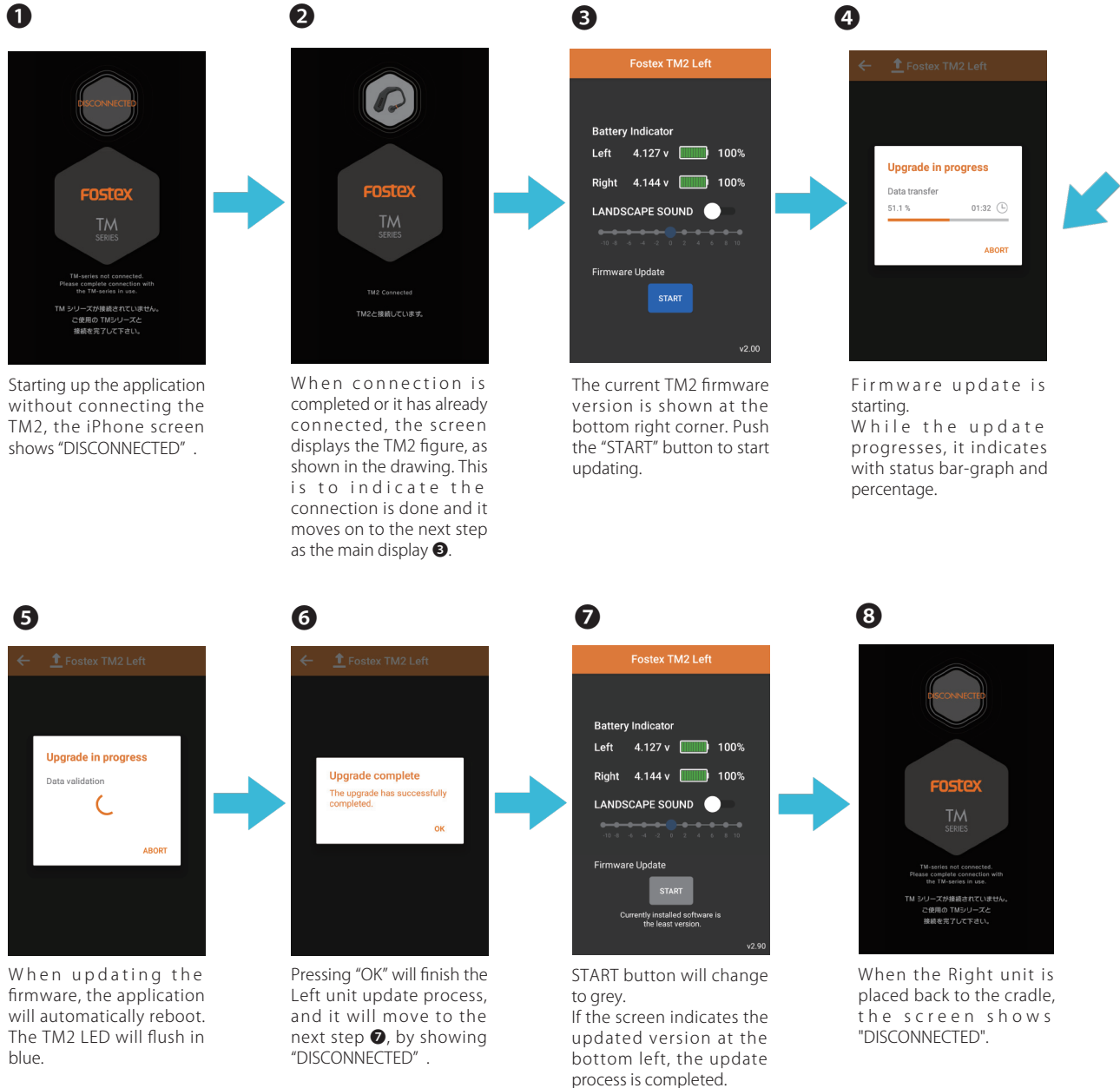


This application can be downloaded at Google Play Store.

Update Procedure (Left unit)
-Start updating from Left unit Ⓛ first-



When updating the firmware, connect the USB cable and supply power to the cradle during the whole updating process. Also make sure that the batteries of both Left and Right TM2 main units are charged enough. First, remove Both Left and Right units from the cradle. As in the ordinary pairing method, connect the Left unit to the iPhone first and then interlink Left and Right units.





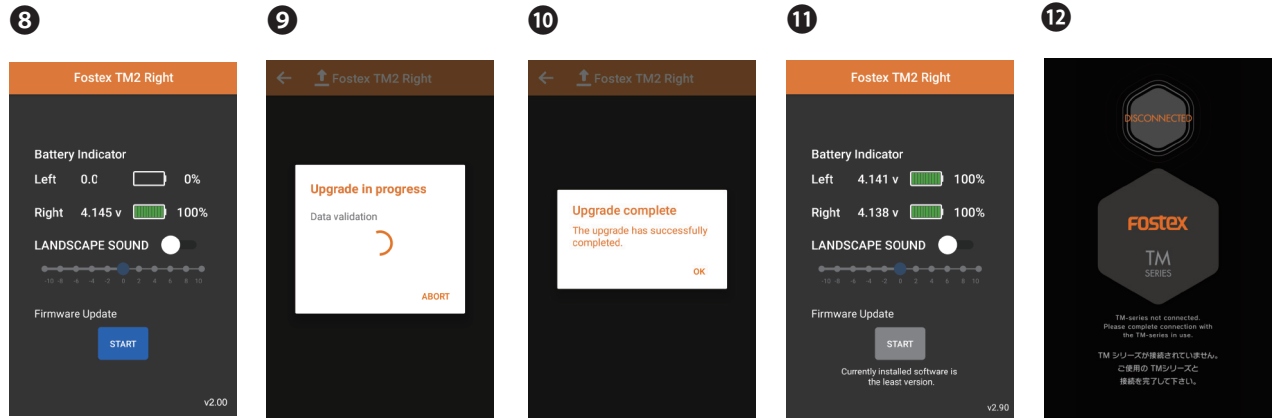
Ⓡ Right Side

Update Procedure (Right unit)

-Automatically swap from
Left unit Ⓛ to Right unit Ⓡ-



When retuning the Left unit, which has just been finished updating, to the cradle that is powered up via USB cable, the Left unit power will be OFF and the Right unit will now automatically switch to the Master. The Right unit update will now become ready. It may take 5 to 10 seconds to be available depending on the environmental situation.



➔ Proceed with updating the Right unit as in the same method as done with Left unit. ➔

START button will change to grey. If the screen indicates the updated version at the bottom left, the update process is completed.

When the Right unit is placed back to the cradle, the screen shows "DISCONNECTED".

After completing both units update...

After completing firmware update on both units, before start using the TM2, place them back to the cradle and charge the battery on both units.

*Estimated time required for entire firmware update process: Approx. 10 minutes for both Left and Right units together.

