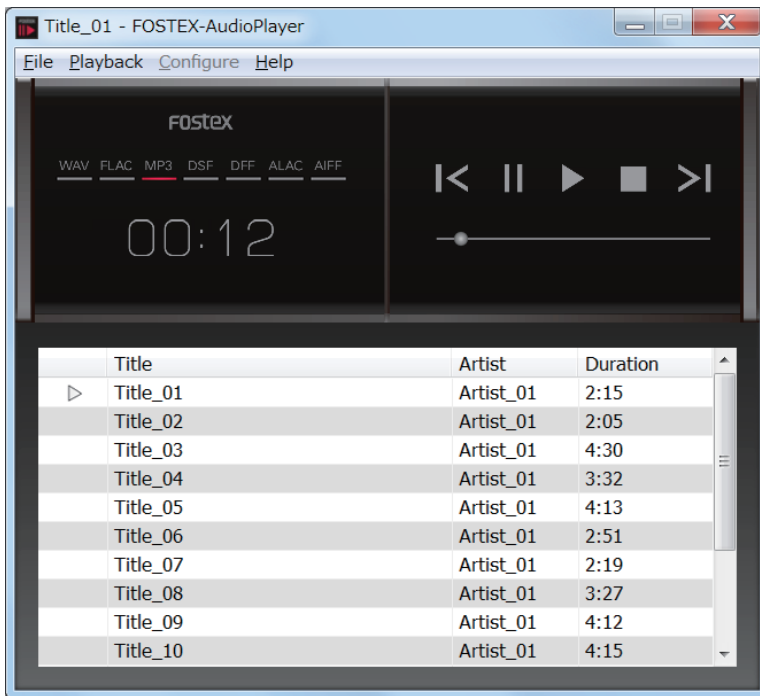


### High-Quality software music player

# FOSTEX-AudioPlayer



(The window above is from the Windows version)

# Features of the FOSTEX-AudioPlayer

"FOSTEX-AudioPlayer" is software that allows you to play music files on your computer through a Fostex DAC (D/A converter) connected via USB.

The software not only supports high-quality source data such as DSD, it also has the following features:

- It provides a high-quality music environment optimized for Fostex products.
- You can control music files through the simple interface and intuitive operation.
- You can start using it instantly without the need for complicated configuration.
- You can change various settings according to the music files or listening environment.
- You can make playlists simply by dragging and dropping files. It also supports playlist saving and loading.

## Compatible products

Visit our Web site for compatible Fostex products.

<http://www.fostex.com/>

## Supported file formats

Format	Extension	Playable range
MP3	mp3	32 kbps to 320 kbps
PCM	wav	44.1 kHz to 192 kHz, 16 bit to 32 bit
FLAC	flac	44.1 kHz to 192 kHz, 16 bit to 32 bit
DSF	dsf	2.8 MHz/5.6 MHz
DSDIFF	dff	2.8 MHz/5.6 MHz
ALAC	m4a	32 kHz to 96 kHz, 16 bit to 24 bit
AIFF	aiff, aif	32 kHz to 192 kHz, 16 bit to 24 bit

## Apple Lossless Audio Codec

DISTRIBUTION: <http://alac.macosforge.org/>

Copyright (c) 2011 Apple Inc. All rights reserved.

Licensed under the Apache License, Version 2.0 (the "License"); you may not use this file except in compliance with the License. You may obtain a copy of the License at <http://www.apache.org/licenses/LICENSE-2.0>

Unless required by applicable law or agreed to in writing, software distributed under the License is distributed on an "AS IS" BASIS, WITHOUT WARRANTIES OR CONDITIONS OF ANY KIND, either express or implied. See the License for the specific language governing permissions and limitations under the License.

## libFLAC

Copyright © 2000-2009 Josh Coalson

Copyright © 2011-2013 Xiph.

Org Foundation Redistribution and use in source and binary forms, with or without modification, are permitted provided that the following conditions are met:

- Redistributions of source code must retain the above copyright notice, this list of conditions and the following disclaimer.
- Redistributions in binary form must reproduce the above copyright notice, this list of conditions and the following disclaimer in the documentation and/or other materials provided with the distribution.
- Neither the name of the Xiph.org Foundation nor the names of its contributors may be used to endorse or promote products derived from this software without specific prior written permission.

THIS SOFTWARE IS PROVIDED BY THE COPYRIGHT HOLDERS AND CONTRIBUTORS "AS IS" AND ANY EXPRESS OR IMPLIED WARRANTIES, INCLUDING, BUT NOT LIMITED TO, THE IMPLIED WARRANTIES OF MERCHANTABILITY AND FITNESS FOR A PARTICULAR PURPOSE ARE DISCLAIMED. IN NO EVENT SHALL THE FOUNDATION OR CONTRIBUTORS BE LIABLE FOR ANY DIRECT, INDIRECT, INCIDENTAL, SPECIAL, EXEMPLARY, OR CONSEQUENTIAL DAMAGES (INCLUDING, BUT NOT LIMITED TO, PROCUREMENT OF SUBSTITUTE GOODS OR SERVICES; LOSS OF USE, DATA, OR PROFITS; OR BUSINESS INTERRUPTION) HOWEVER CAUSED AND ON ANY THEORY OF LIABILITY, WHETHER IN CONTRACT, STRICT LIABILITY, OR TORT (INCLUDING NEGLIGENCE OR OTHERWISE) ARISING IN ANY WAY OUT OF THE USE OF THIS SOFTWARE, EVEN IF ADVISED OF THE POSSIBILITY OF SUCH DAMAGE.

- "DSD" is a trademark.
- ASIO is a trademark of Steinberg Media Technologies GmbH.
- Microsoft, Windows and Windows Vista are either registered trademarks or trademarks of Microsoft Corporation in the United States and/or other countries.
- Apple, Macintosh, Mac and Mac OS are trademarks of Apple Inc., registered in the U.S. and other countries. Other company names and product names in this document are the trademarks or registered trademarks of their respective owners.
- All other company names, product names and logos are trademarks or registered trademarks of their respective owners.

# Contents

The information in this manual is divided into two parts: Information about the Windows software, and information about the Mac software. Read the appropriate edition depending on your computer environment.

## ■ Windows edition

Installation .....	5
Operating environment.....	5
Installing .....	5
Uninstalling .....	5
Starting the software.....	5
Exiting the software.....	5
Window components.....	6
Playing music files .....	7
Configuring connected devices .....	7
Making playlists .....	8
Playing playlists .....	9
Editing playlists.....	9
Troubleshooting .....	10

## ■ Mac edition

Installation .....	11
Operating environment.....	11
Installing .....	11
Uninstalling .....	11
Starting the software.....	11
Exiting the software.....	11
Window components.....	12
Playing music files .....	13
Configuring connected devices ....	13
Making playlists .....	14
Playing playlists .....	15
Editing playlists.....	15
Troubleshooting .....	16

# Installation

"FOSTEX-AudioPlayer" does not have an installer. Copy the software using the following procedure.

## ■ Operating environment

OS	Windows 8/7/Vista
CPU	Intel Core 2 Duo or above
Memory	2 GB or more

## ■ Installing

Copy "FOSTEX-AudioPlayer(Win)VerXXX.zip" to your computer and unzip to install.

### Note

- Do not move or delete the "Plugin" folder. To run the software, this folder must be placed in the same hierarchy as "FOSTEX-AudioPlayer".

## ■ Uninstalling

Delete the entire folder which contains "FOSTEX-AudioPlayer".

## ■ Starting the software

### Note

- Before starting the software, install the appropriate driver and connect the Fostex product with a USB cable.
- Before starting the software, turn on the Fostex product and select USB as the source.

Double-click "FOSTEX-AudioPlayer" in the folder to start the software.



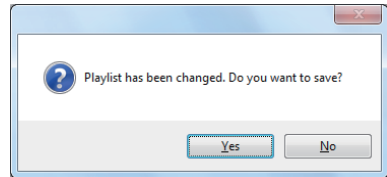
"FOSTEX-AudioPlayer"

## ■ Exiting the software

Click the "☒" mark on the upper right of the main display or select "Exit" from the "File" menu.

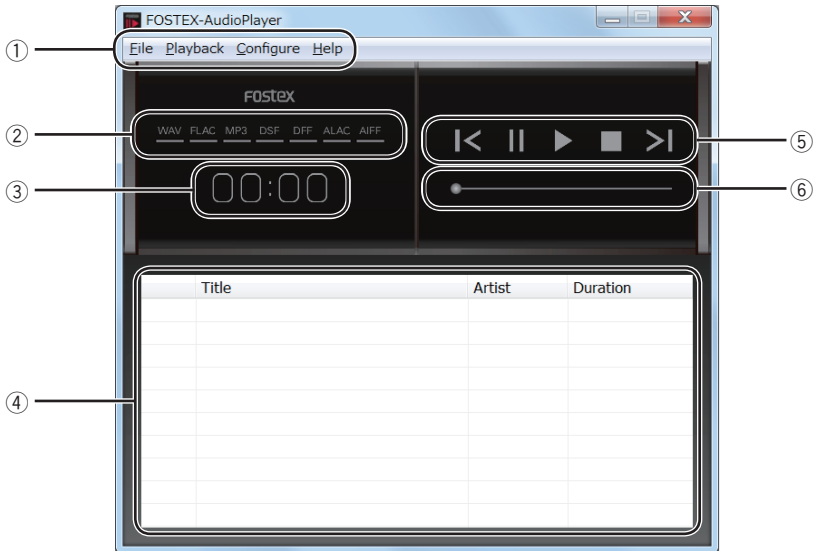
### Note

- When exiting the software after adding files to the current playlist, "Playlist has been changed. Do you want to save?" is displayed in a dialog box. Select "Yes" to save the playlist or select "No" to discard the changes.



# Window components

The main window is displayed when the software starts. The components are as follows.



## ① Menu bar

You can change the various settings.

### File

You can save or load a playlist.

### Playback

You can control playback of the playlist by playing, pausing etc.

### Configure

You can configure the connected Fostex product.

### Help

The current versions of the software and plugins are displayed.

## ② File information

The file format of the file being played is displayed.

## ③ Playback time

The playback time of the file being played is displayed.

## ④ Playlist

The artist, title and duration of each file in the playlist is displayed.

You can add files to the playlist by dragging and dropping them into this area.

## ⑤ Controls

⏪ : previous file

⏸ : pause

▶ : play


■ : stop

⏩ : next file

## ⑥ Progress bar

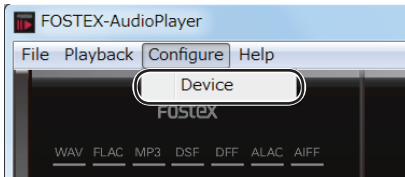
The progress bar shows how long the file has been playing. Click the progress bar or drag the slider to move within the file.

# Playing music files

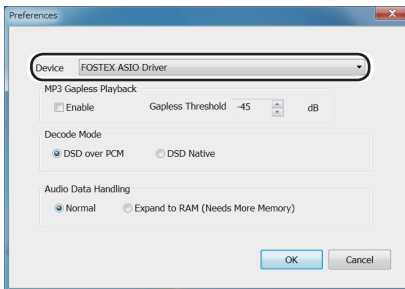
The connected device must be configured the first time it is used. After the configuration, make a playlist and click  to start playback. You can also choose to repeat playback or shuffle playback.

## ■ Configuring connected devices

- 1 Select **"Device"** from the **"Configure"** menu.



- 2 Select the connected device from the **"Device"** drop-down list.



Set the other options if necessary.

### MP3 Gapless Playback

When the **"Enable"** box is checked, playback skips to the next file automatically when the volume becomes lower than the **"Gapless Threshold"** setting when playing MP3 files.

### Decode Mode

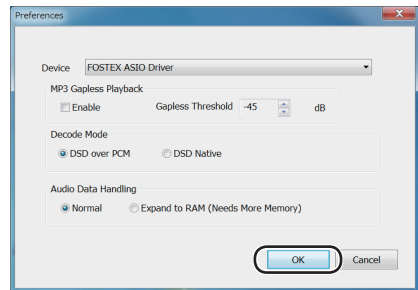
You can select the transfer method for DSD data from **"DSD over PCM"** (DoP - transfers DSD data over USB using PCM file containers) and **"DSD Native"** (transferring DSD directly).

### Audio Data Handling

You can select the file access method from **"Normal"** and **"Expand to RAM (Needs More Memory)"** (expands file data to RAM before playback).

The latter reduces the load on the computer and stabilizes playback, but playback may take some time to start.

- 3 Click **"OK"** to close the dialog box.

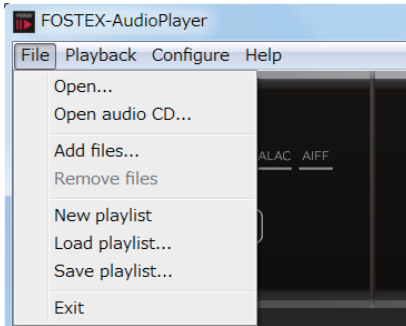


### Note

- The **"Configure"** menu is not selectable during playback.
- The configuration may be cleared when you start the software without connecting the product. In this case, connect the product and restart the software.

## ■ Making playlists

Use the "File" menu to make/change playlists.



### Adding a new playlist

Select "Open..." from the "File" menu, or drag and drop files into the playlist area of the main window.

### Adding files from an audio CD

Select "Open audio CD..." from the "File" menu and add files.

### Adding files to the playlist

Select "Add files..." from the "File" menu, or drag and drop files into the playlist area of the main window.

### Deleting files from the playlist

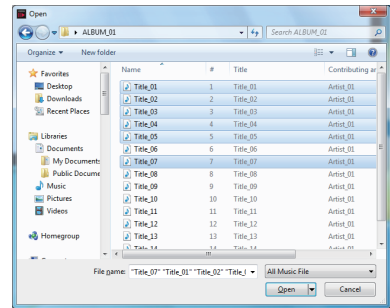
Choose files to delete and select "Remove file" from the "File" menu, or right click a file to delete and select "Remove".

### Changing the order

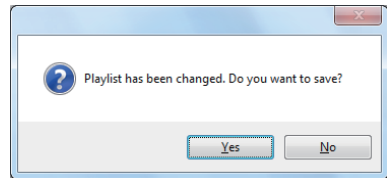
Drag a file in the playlist higher or lower.

## Note

- You can choose multiple files in the dialog box that appears when selecting "Open...", "Open audio CD..." or "Add files..." from the "File" menu.



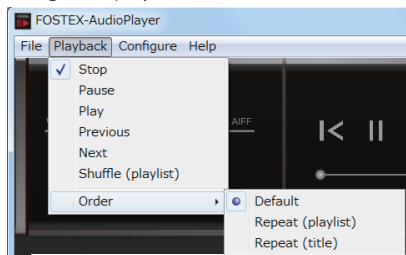
- When you select "Open..." after adding files to the current playlist, "Playlist has been changed. Do you want to save?" is displayed in a dialog box. Select "Yes" to save the playlist or select "No" to discard the changes.






## ■ Playing playlists

Use the **"Playback"** menu to play, pause, change the playback order, etc.




### Starting playback


Select **"Play"** from the **"Playback"** menu, or click .

You can also start playback by double-clicking a file, or right clicking a file and selecting **"Play"**.



### Stopping playback

Select **"Stop"** from the **"Playback"** menu, or click .

### Pausing playback

Select **"Pause"** from the **"Playback"** menu or click .

### Skip to the previous/next file

Select **"Previous"** or **"Next"** from the **"Playback"** menu, or click  or .

### Shuffle (random) playback

Select **"Shuffle (playlist)"** from the **"Playback"** menu.

### Repeat playback

Select **"Order"** from the **"Playback"** menu.

#### **"Repeat (playlist)":**

repeats the entire playlist

#### **"Repeat (title)":**

repeats the current file

#### **"Default":**

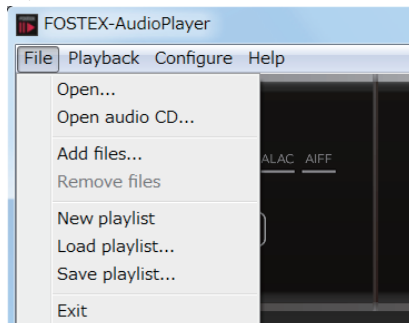
cancels repeat playback

## ■ Editing playlists

After adding many files from multiple albums, you can save the playlist.

You can load and use saved playlists anytime you want.

Use the **"File"** menu to make/change the playlist.



### Making a new playlist

Select **"New playlist"** from the **"File"** menu.

### Loading a saved playlist

Select **"Load playlist..."** from the **"File"** menu to load a playlist.

### Saving the current playlist

Select **"Save playlist..."** from the **"File"** menu to save the playlist.

### Note

- The **"File"** menu is not selectable during playback.
- When you select **"New playlist"** or **"Load playlist..."** after adding files to the current playlist, **"Playlist has been changed. Do you want to save?"** is displayed in a dialog box. Select **"Yes"** to save the playlist or select **"No"** to discard the changes.
- The original music files are not deleted even if you delete the playlist.

# Troubleshooting

Common problems and solutions are listed below.

Problem	Solutions
There is no sound.	<ul style="list-style-type: none"><li>• Confirm that the Fostex product is connected properly.</li><li>• Confirm that the source of the Fostex product is set to "USB".</li><li>• Confirm the output destination.</li></ul>
"audio device error (code = -1000)" is displayed and files cannot be played.	<ul style="list-style-type: none"><li>• Confirm that the Fostex product is correctly connected.</li><li>• Select the device in the "<b>Preferences</b>" dialog.</li></ul>
"Audio file is broken ("XXX")" is displayed and files cannot be added.	<ul style="list-style-type: none"><li>• Confirm that the file can be played on other players.</li><li>• Confirm that other files are playable.</li></ul>
The device cannot be selected in the " <b>Preferences</b> " dialog.	<ul style="list-style-type: none"><li>• Exit the software and restart after confirming that the Fostex product is connected properly.</li></ul>

# Installation

"**FOSTEX-AudioPlayer**" does not have an installer. Copy the software using the following procedure.

## ■ Operating environment

OS	OS X 10.7 (Lion) OS X 10.8 (Mountain Lion)
CPU	Intel Core 2 Duo or above
Memory	2 GB or more

## ■ Installing

Copy "**FOSTEX-AudioPlayer(Mac)VerXXX.zip**" to your computer and unzip to install.

## ■ Uninstalling

Delete the "**FOSTEX-AudioPlayer**" executable file.

## ■ Starting the software

### Note


- Before starting the software, turn on the Fostex product.

Double-click the "**FOSTEX-AudioPlayer**" icon to start the software.



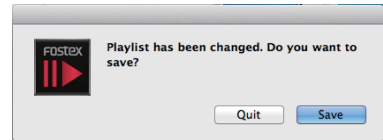
"**FOSTEX-AudioPlayer**" icon

## ■ Exiting the software

Click  on the upper left of the main display or select "**Quit FOSTEX-AudioPlayer**" from the "**File**" menu.

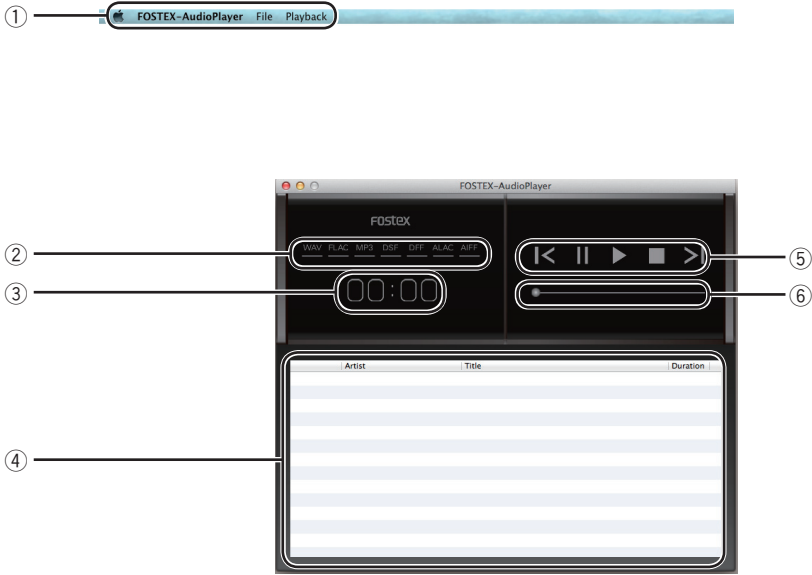
### Note

- When exiting the software after adding files to the current playlist, "**Playlist has been changed. Do you want to save?**" is displayed in a dialog box. Select "**Save**" to save the playlist or select "**Quit**" to discard the changes.



# Window components

The main window is displayed when the software starts. The components are as follows.



## ① Menu bar

You can change the various settings.

### **FOSTEX-AudioPlayer**

You can configure the connected Fostex product.

### **File**

You can save or load a playlist.

### **Playback**

You can control playback of the playlist by playing, pausing etc.

## ② File information

The file format of the file being played is displayed.

## ③ Playback time

The playback time of the file being played is displayed.

## ④ Playlist


The artist, title and duration of each file in the playlist is displayed.

You can add files to the playlist by dragging and dropping them into this area.

## ⑤ Controls

 : previous file

 : pause

 : playback


 : stop

 : next file

## ⑥ Progress bar

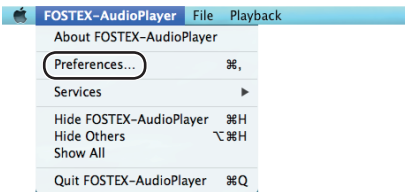
The progress bar shows how long the file has been playing. Click the progress bar or drag the slider to move within the file.

# Playing music files

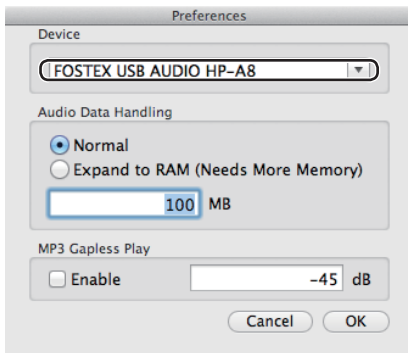
The connected device must be configured the first time it is used. After the configuration, make a playlist and click  to start playback. You can also choose to repeat playback or shuffle playback.

## ■ Configuring connected devices

- 1 Select **"Preferences..."** from the **"FOSTEX-AudioPlayer"** menu.



- 2 Select the connected device from the **"Device"** drop-down list.



Set the other options if necessary.

### Audio Data Handling

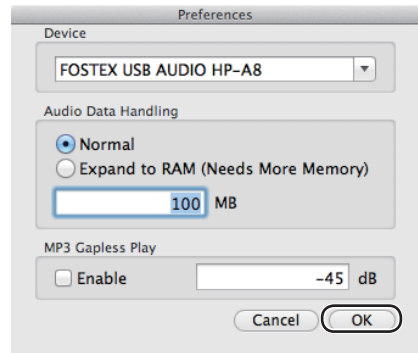
You can select the file access method from **"Normal"** and **"Expand to RAM (Needs More Memory)"** (expands file data to RAM before playback).

When you select the latter, set the memory volume to assign. The latter reduces the load on the computer and stabilizes playback, but playback may take some time to start.

### MP3 Gapless Play

When the **"Enable"** box is checked, playback skips to the next file automatically when the volume becomes lower than the **"Gapless Threshold"** setting when playing MP3 files.

- 3 Click **"OK"** to close the dialog box.

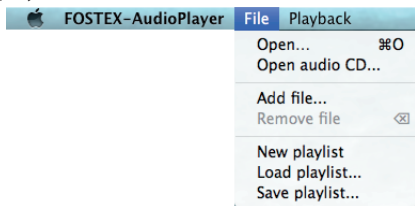


### Note

- The **"Preferences..."** menu is not selectable during playback.
- The configuration may be cleared when you start the software without connecting the product. In this case, connect the product and restart the software.
- DSD files are transferred by "DSD over PCM" (DoP - transfers DSD data over USB using PCM file containers). **"DSD Native"** is not selectable.

## ■ Making playlists

Use the "File" menu to make/change playlists.



### Adding a new playlist

Select "Open..." from the "File" menu, or drag and drop files into the playlist area of the main window.

### Adding files from an audio CD

Select "Open audio CD..." from the "File" menu and add files.

### Adding files to the playlist

Select "Add files..." from the "File" menu, or drag and drop files into the playlist area of the main window.

### Deleting files from the playlist

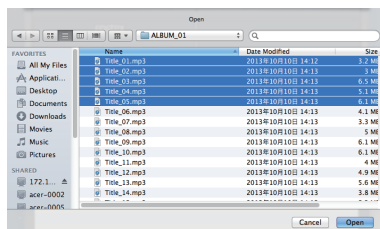
Choose files to delete and select "Remove file" from the "File" menu, or right click a file to delete and select "Remove".

### Changing the order

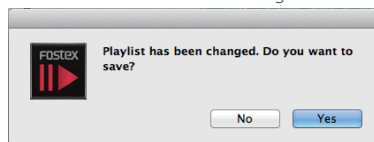
Drag a file in the playlist higher or lower.

## Note

- You can choose multiple files in the dialog box that appears when selecting "Open...", "Open audio CD..." or "Add files..." from the "File" menu.

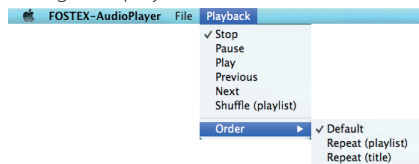


- When you select "Open..." after adding files to the current playlist, "Playlist has been changed. Do you want to save?" is displayed in a dialog box. Select "Yes" to save the playlist or select "No" to discard the changes.




## ■ Playing playlists

Use the **"Playback"** menu to play, pause, change the playback order, etc.



### Starting playback


Select **"Play"** from the **"Playback"** menu, or click .

You can also start playback by double-clicking a file, or right clicking a file and selecting **"Play"**.



### Stopping playback

Select **"Stop"** from the **"Playback"** menu, or click .

### Pausing playback

Select **"Pause"** from the **"Playback"** menu or click .

### Skip to the previous/next file

Select **"Previous"** or **"Next"** from the **"Playback"** menu, or click  or .

### Shuffle (random) playback

Select **"Shuffle (playlist)"** from the **"Playback"** menu.

### Repeat playback

Select **"Order"** from the **"Playback"** menu.

#### **"Repeat (playlist)":**

repeats the entire playlist

#### **"Repeat (title)":**

repeats the current file

#### **"Default":**

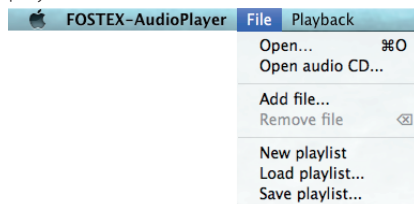
cancels repeat playback

## ■ Editing playlists

After adding many files from multiple albums, you can save the playlist.

You can load and use saved playlists anytime you want.

Use the **"File"** menu to make/change the playlist.



### Making a new playlist

Select **"New playlist"** from the **"File"** menu.

### Loading a saved playlist

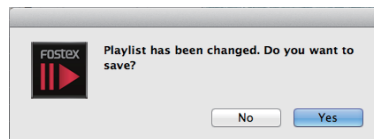
Select **"Load playlist..."** from the **"File"** menu to load a playlist.

### Saving the current playlist

Select **"Save playlist..."** from the **"File"** menu to save the playlist.

### Note

- The **"File"** menu is not selectable during playback.
- When you select **"New playlist"** or **"Load playlist..."** after adding files to the current playlist, **"Playlist has been changed. Do you want to save?"** is displayed in a dialog box. Select **"Yes"** to save the playlist or select **"No"** to discard the changes.



- The original music files are not deleted even if you delete the playlist.

# Troubleshooting

Common problems and solutions are listed below.

Problem	Solutions
There is no sound.	<ul style="list-style-type: none"><li>• Confirm that the Fostex product is connected properly.</li><li>• Confirm that the source of the Fostex product is set to "<b>USB</b>".</li><li>• Confirm the output destination.</li></ul>
" <b>No output device has been selected.</b> " is displayed and files cannot be played.	<ul style="list-style-type: none"><li>• Confirm that the Fostex product is correctly connected.</li><li>• Select the device in the "<b>Preferences</b>" dialog.</li></ul>
Files cannot be added.	<ul style="list-style-type: none"><li>• Confirm that the file can be played on other players.</li><li>• Confirm that other files are playable</li></ul>
The device cannot be selected in the " <b>Preferences</b> " dialog.	<ul style="list-style-type: none"><li>• Exit the software and restart after confirming that the Fostex product is connected properly.</li></ul>