

# Model 8700

TIME CODE GENERATOR  
タイムコードジェネレーター

## Owner's Manual 取扱説明書

### ■ Warranty Statement

This product is hereby warranted for one year from the date of purchase stated below, in the country of original purchase. The warranty covers defects in materials and workmanship. It excludes damage and deterioration arising from normal wear, or damage caused by accident, abuse or misuse. It does not apply to the equipment with the serial number defaced, modified or removed. This warranty is valid provided that the stamp of the shop where you purchased the unit, and the date of purchase appear below.



# Fostex

Retailer's stamp:

Date of purchase:

FOSTEX CORPORATION 560-3, Miyazawa-cho, Akishima, Tokyo, Japan  
FOSTEX CORPORATION OF AMERICA 15431, Blackburn Ave., Norwalk, CA 90650, U.S.A.

© PRINTED IN JAPAN JUL 1985 8288110000

### 1. INTRODUCTION

GB

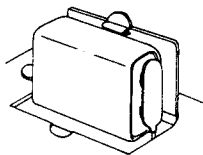
Fostex Model 8700 is a convenient battery driven time code generator capable of generating the following four time code signals.

- \* SMPTE 30 F.P.S.
- \* SMPTE DROP FRAME, 29.97 F.P.S.
- \* EBU 25 F.P.S.
- \* FILM 24 F.P.S.

### 2. PREPARATION

#### 2.1 Loading the battery

- 1) Open the battery lid.
- 2) Pull out the battery snap plug and connect it to the battery.
- 3) Taking care not to twist the wire or apply excessive force on the battery snap plug, insert the battery in position and close the lid.



NOTE: The battery is delivered.

Please follow the above instructions for loading the battery.

Battery life is 6 hours of continuous use at room temperature. Replace battery when the POWER LED becomes dim.

#### 2.2 External DC supply

- 1) Use an AC adaptor (Example: Fostex 8070, etc.) with an output of +9V ~ +15V DC.

The center pole of the input jack is positive (+).

#### 2.3 Time code select

Set the switch by a screwdriver to the required FRAME and with the power switched off.

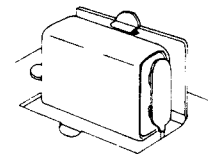
- 24: FILM 24 F.P.S.
- 25: EBU 25 F.P.S.
- 30: SMPTE 30 F.P.S.
- DF: SMPTE DROP FRAME

### 1.はじめに

J

FOSTEX MODEL 8700は、次の4つの標準のタイムコードをもつバッテリー駆動式の簡便に使用できるタイムコードジェネレーターです。

- SMPTE 30 F.P.S.
- SMPTE DROP FRAME 29.97 F.P.S.
- EBU 25 F.P.S.
- FILM 24 F.P.S.



### 2.ご使用になる前に

#### 2.1.電池の装填

- (1) ふたを開く。
- (2) 電池スナップを引き出し、電池をつなぐ。
- (3) 電池スナップやリード線に無理な力が加わらないように、電池を収納し、ふたを閉じます。

ご注意：電池は付属されています。電池交換の要領で接続してからお使い下さい。電池は常温で6時間連続使用できます。パワーLEDが暗くなったら電池を交換して下さい。

#### 2.2.外部DC電源使用の場合

+9V~+15V DCのACアダプター(FOSTEX 8070など)を用いて下さい。極性はDC入力ジャックのセンターが⊕です。

#### 2.3.タイムコードセレクト

電源オフの状態、必要とするタイムコードにFRAMEのスイッチを切り換えて下さい。

- 24 : FILM 24 F.P.S.
- 25 : EBU 25 F.P.S.
- 30 : SMPTE 30 F.P.S.
- DF : SMPTE DROP FRAME

#### 2.4.タイムコード出力調整レベル

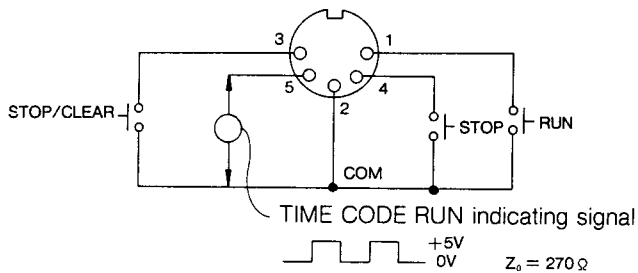
ユニット後面のレベル調整ボリュームで、出力レベルを-20dBV(0.1V)~+2dBV(1.2V)に調整できますので、レコーダーのメーターを見ながら最適レベルにセットします。

## 2.4 Time code output level adjustment

The output level can be adjusted  $-20\text{dBV}$  (0.1V)  $\sim$   $+2\text{dBV}$  (1.2V) by the LEVEL pot on the Unit rear panel. Set to optimum level by monitoring the recorder meter.

## 2.5 Remote control

Remote control of the Unit will be possible by plugging in a switch system, shown below, to the rear panel REMOTE connector. These switches are of the momentary contact type.



- RUN : TIME code is "run".  
 STOP : Time code is stopped. Depressing the RUN button again starts the time code from the point it was stopped.  
 STOP/CLEAR : Time code is stopped and the Unit reset to 0 Hour, 0 MIN, 0 SEC and 0 FRAME.

## 3. OPERATION

- 3.1 Depress the POWER button and time code will start from 0 HOUR, 0 MIN, 0 SEC and 0 FRAME. The LED above the button will blink to indicate that the time code is running.  
 3.2 Depress the POWER button again and the blinking LED will be extinguished, time code run will cease and power will be switched off.

## 4. SPECIFICATIONS

Operating code	SMPTE 30 F.P.S. SMPTE DROP FRAME 29.97 F.P.S. EBU 25 F.P.S. FILM 24 F.P.S.
Output level	$-20\text{dBV}$ (0.1V) $\sim$ $+2\text{dBV}$ (1.2V)
Output load impedance	10K $\Omega$ or higher
Signal rise time	25 $\mu\text{sec}$ . (measured between 10% and 90% of amplitude)
Power supply	Battery: 9V (S-006P, 6F22 or equivalent) External power: +9V $\sim$ +15V DC
Power consumption	20mA (typical)
Physical dimensions	38(H) x 147(W) x 88(D)mm [1-1/2(H) x 6(W) x 3-1/2(D)inches]
Weight	Unit only: 400g (7/8 lbs.) Packaged: 450 g (1 lb.)

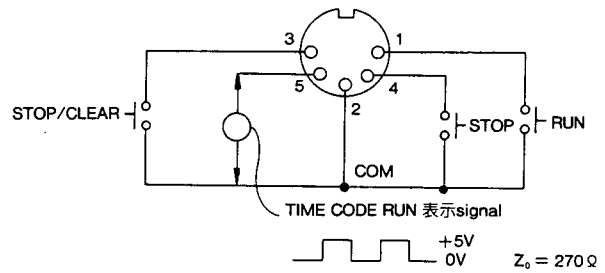
## SAFETY INSTRUCTIONS

### WARNING READ BEFORE OPERATING

1. Read Instructions — All the safety and operating instructions should be read before the appliance is operated.
2. Retain instruction — The safety and operating instructions should be retained for future reference.
3. Heed Warnings — All warnings on the appliance and in the operating instructions should be adhered to.
4. Follow instructions — All operating and use instructions should be followed.
5. Water and Moisture — The appliance should not be used near water — for example, near a bathtub, washbowl, kitchen sink, laundry tub, in a wet basement, or near a swimming pool, etc.
6. Ventilation — The appliance should be situated so that its location or position does not interfere with its proper ventilation. For example, the appliance should not be situated on a bed, sofa, rug, or similar surface that may block the ventilation openings; or, placed in a built-in installation, such as a bookcase or cabinet that may impede the flow of air through the ventilation openings.
7. Heat — The appliance should be situated away from heat sources such as radiators, heat registers, stoves, or other appliances (including amplifiers) that

## 2.5. リモートコントロール

後面の REMOTE コネクターに、図のようにスイッチを接続するとリモートコントロールができます。  
 なお、スイッチはモメンタリータイプのものご使用下さい。



- RUN : Time コードが作動します。  
 STOP : Time コードがストップします。  
 再度 RUN ボタンを押すと、ストップしたタイムコードからスタートします。  
 STOP/CLEAR : Time コードがストップし、0時0分0秒0Fにリセットします。

## 3. 操作方法

- 3.1.  
 パワースイッチボタンを押すと、タイムコードは0時0分0秒0Frame からスタートします。タイムコードが作動中はボタン上のLEDが点滅し、動作中を表します。  
 3.2.  
 再びパワースイッチボタンを押すと、LEDの点滅は消えてタイムコードの作動は停止し、電源が切れます。

## 4. 仕様

オペレーティングコード	SMPTE 30F.P.S. SMPTE DROP FRAME 29.97F.P.S. EBU 25F.P.S. FILM 24F.P.S.
出力レベル	$-20\text{dBV}$ (0.1V) $\sim$ $+2\text{dBV}$ (1.2V)
出力ロードインピーダンス	10k $\Omega$ またはそれ以上
立ち上り・立ち下り時間	25 $\mu\text{sec}$ (10% $\sim$ 90%)
電源	電池 : 9V (S-006P, 6F22または相当品) 外部電源 : +9V $\sim$ +15V DC
消費電流	20mA (typ.)
外形寸法	38(H) x 147(W) x 88(D) mm
重さ	本体のみ 400g 梱包込み 450g

produce heat.

8. Cleaning — The appliance should be cleaned only as recommended by the manufacturer.
9. If the battery pack is not to be used for an extended period, remove all batteries from the pack as there is danger of electrolyte leaking out and damaging the pack.
10. Object and Liquid Entry — Care should be taken so that objects do not fall and liquids are not spilled into the enclosure through openings.
11. Damage Requiring Service — The appliance should be serviced by qualified service personnel when:
  - A. The power-supply cord or the plug has been damaged; or
  - B. Objects have fallen, or liquid has been spilled into the appliance; or
  - C. The appliance has been exposed to rain; or
  - D. The appliance does not appear to operate normally or exhibits a marked change in performance; or
  - E. The appliance has been dropped, or the enclosure damaged.
12. Servicing — The user should not attempt to service the appliance beyond that described in the operating instructions. All other servicing should be referred to qualified service personnel.

WARNING: To avoid possible electric shock hazard, do not expose this appliance to rain or moisture. There are no user serviceable parts inside. Refer servicing to qualified service personnel.